

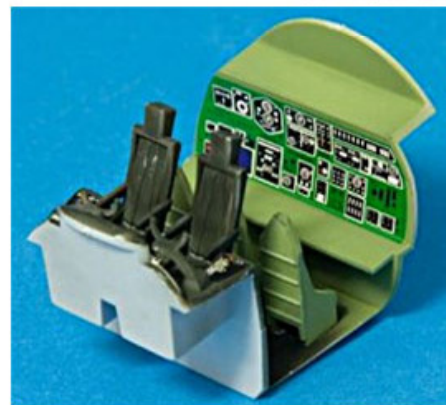
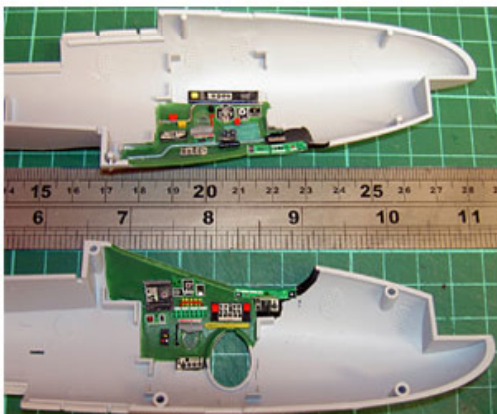
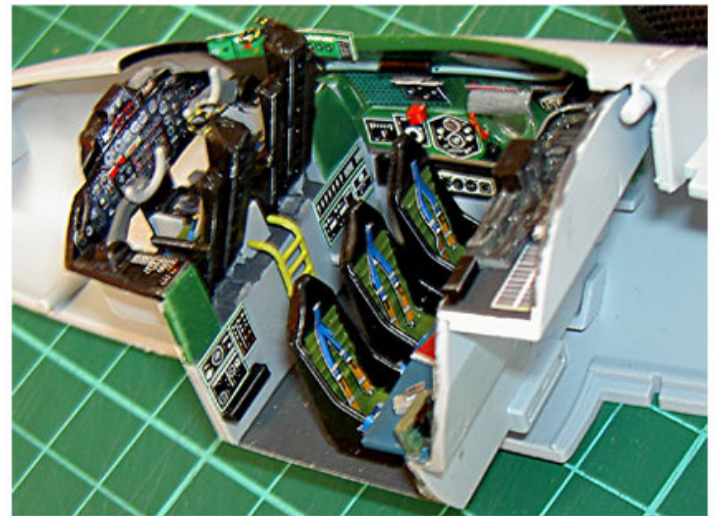
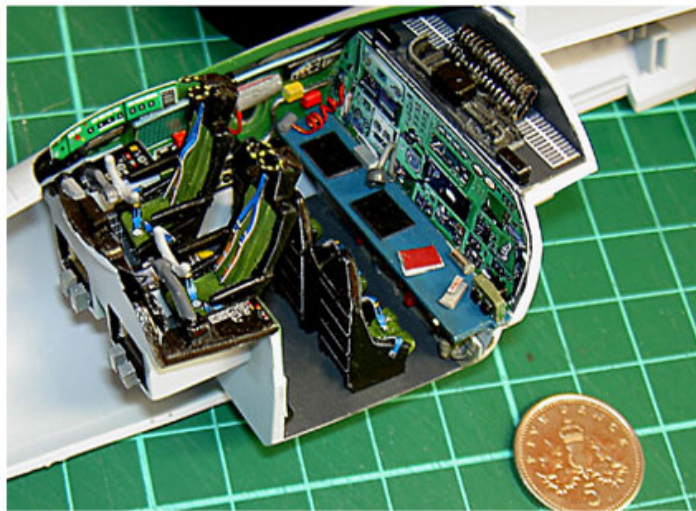
VICKERS VALIANT B.1 NUCLEAR BOMBER



AIRFIX 1:72 KIT

A most welcome new kit of a subject that has been on many a modeller's wish list for dozens of years. Now we have a very good and mostly accurate 1:72 model of the Valiant which will join and compliment the Matchbox Victor and Airfix Vulcan 1:72 scale kits

I started the kit as is usual with most projects by working on the cockpit area which is a bit basic but more than adequate as very little can be seen when the canopy is added. I had an idea which worked very well, I made the canopy removable and added a lot of extra details using some good photos downloaded from the internet



DETAILED SIDE PANELS

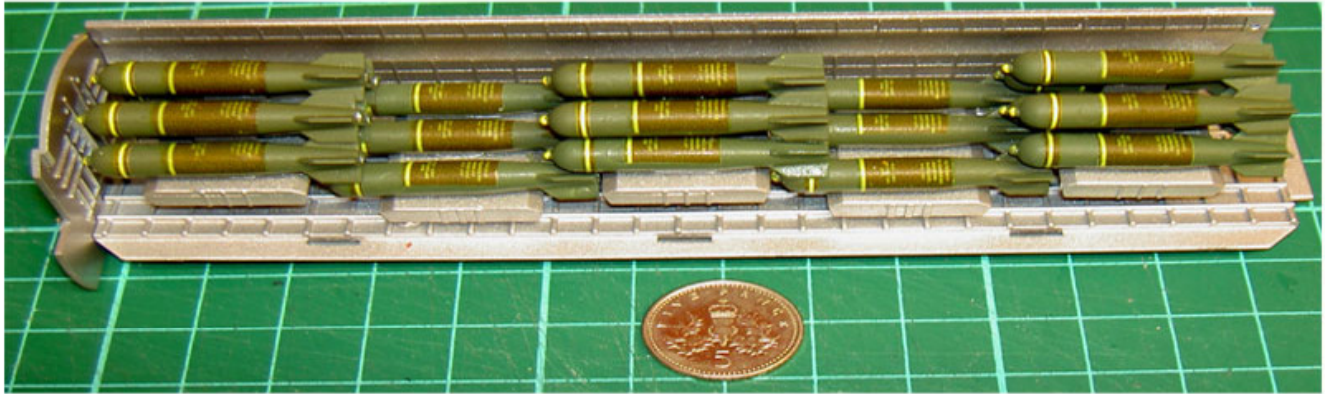
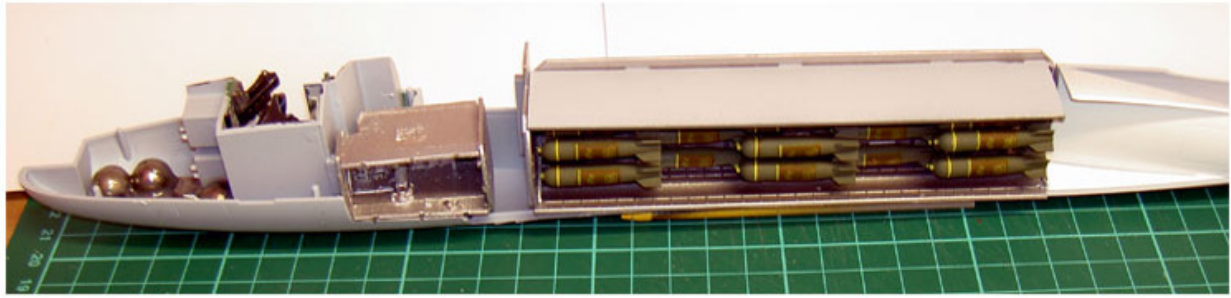
OUT OF BOX DETAIL

REMOVEABLE CANOPY

The kit goes together very well considering the size of some parts and the fit is excellent. I used Alley Cat's Engine set, Main & Nosewheel Bay set and their Wing and Tail upgrade set to correct and improve the model.

[continued overleaf.....](#)

Below you see the internal details before joining the fuselage halves together with the essential weights added to the nose, bathed in a pool of epoxy.



Twentyone 1,000 pound bombs are installed with added home made decals via Photoshop. Airfix also supply a nuclear bomb which I posed on a Belcher Bits 1:72 RAF type 'H' trolley. Vortex generators supplied by Alley Cat in etched brass were installed on wings, fin and tailplane after removing the overthick kit ones. Very little filler was needed and I undercoated the model with Halfords white primer then their Appliance White was used to finish the main paint job. A wash of medium grey enamel paint was added to pick out the panel lines followed by a very fine overspray coat of eggshell white enamel to blend everything in. The black and grey areas were masked off and brush painted. The decal sheet is very large and comprehensive and several versions of the Valiant are catered for. Around 70 decals are added many of them tiny and hard to see. This problem is added to because the background colour of the decal sheet is blue and when the decal is wetted the pale blue items disappear into the background! Apart from that, the decals are very well printed with a matt finish. When the decals were set, I brush painted a coat of Johnson's Kleer to seal them in.



I added a scratchbuilt access ladder and a figure to give a sense of scale which completed my Valiant project which was a delight and real pleasure to build.